



شركة مكين للتصنيع
Makkeen Industrial Company

PROFILE COMPANY

X

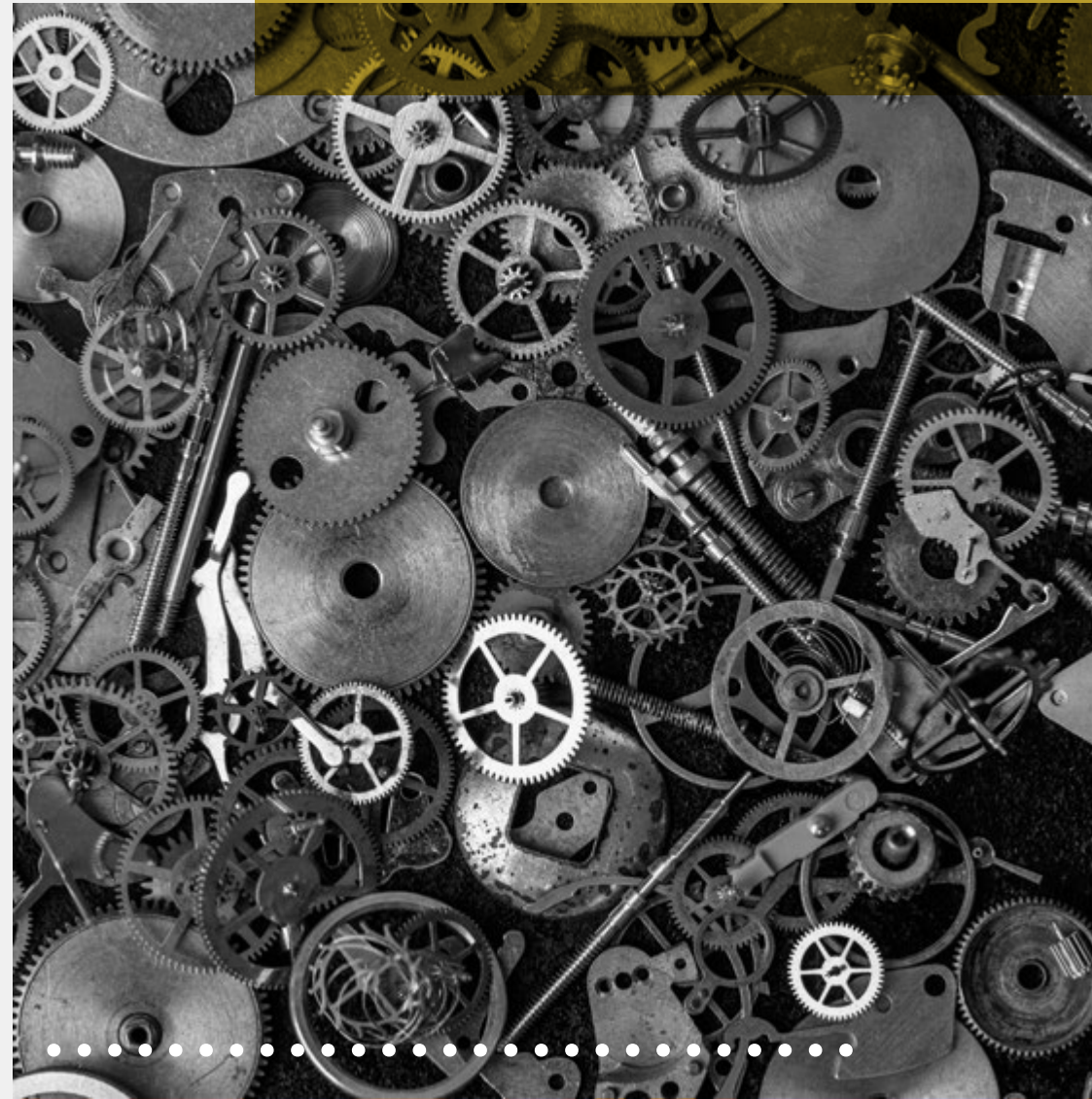


X

COMPANY INTRODUCTION

Makkeen Industrial is committed to helping our customers achieve their objectives through on time in full production and supply of CNC machined components.

Established in 2010, we have earned an excellent reputation for process innovation, production, cost effective CNC precision machining and delivery of high quality machined components across a diverse spectrum of industries. Also dealing in used & new CNC/conventional machines, measuring tools & machine accessories





VISION

To emerge as a comprehensive service provider for the industrial sector offering wide range of services that meet all the requirement and expectations of the client.



MISSION

To provide high quality and efficient services to a wide range of industries throughout the world.

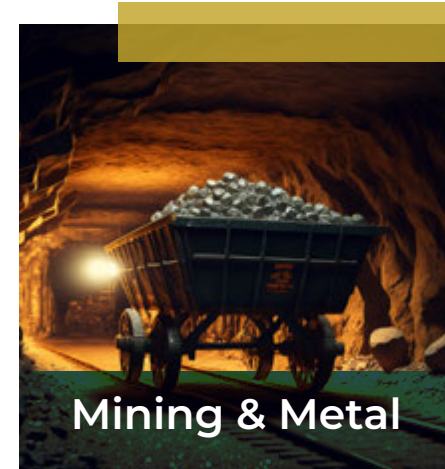
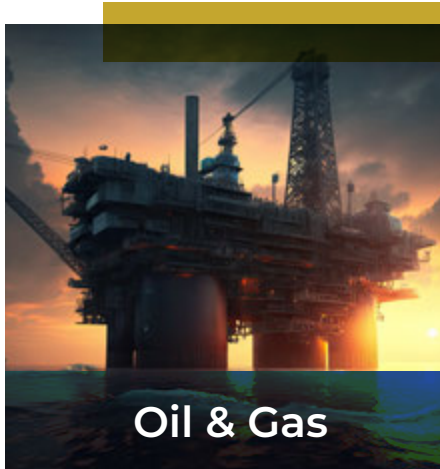


SERVICES





INDUSTRIES SERVED



OUR CERTIFICATIONS



OUR CERTIFICATIONS

ENTERPRISES CALIBRATION CERTIFICATE

Customer Name and Address: MPT-02, AL-DIBRAH ST, DAMMAM, SA
 Calibration Date: February 5, 2020
 Calibration Due Date: February 5, 2021

Range	Standard Output	SIAC Output (SIAC)	Deviation	Error %
0 to 100 mm	0	0.000	0.000	0.0000
	5	5.000	0.000	0.0000
	10	10.000	0.000	0.0000
	15	15.000	0.000	0.0000
	20	20.000	0.000	0.0000

Notes:

- The device shall be calibrated in full.
- SIAC is defined as the linear calibration.
- The measurement uncertainty shall be 0.005 mm.
- The calibration certificate shall not be reproduced or used without written approval of MPT.
- The device shall return to the factory calibration.

Makkeen Industrial Company

ENTERPRISES CALIBRATION CERTIFICATE

Customer Name and Address: MPT-02, AL-DIBRAH ST, DAMMAM, SA
 Calibration Date: February 5, 2020
 Calibration Due Date: February 5, 2021

Range	Standard Output	SIAC Output (SIAC)	Deviation	Error %
0 to 20 mm	0	0.000	0.000	0.0000
	5	5.000	0.000	0.0000
	10	10.000	0.000	0.0000
	15	15.000	0.000	0.0000
	20	20.000	0.000	0.0000

Notes:

- The device shall be calibrated in full.
- SIAC is defined as the linear calibration.
- The measurement uncertainty shall be 0.005 mm.
- The calibration certificate shall not be reproduced or used without written approval of MPT.
- The device shall return to the factory calibration.

Makkeen Industrial Company

ENTERPRISES CALIBRATION CERTIFICATE

Customer Name and Address: MPT-02, AL-DIBRAH ST, DAMMAM, SA
 Calibration Date: February 5, 2020
 Calibration Due Date: February 5, 2021

Range	Standard Output	SIAC Output (SIAC)	Deviation	Error %
0 to 100 mm	0	0.000	0.000	0.0000
	50	50.000	0.000	0.0000
	100	100.000	0.000	0.0000
	150	150.000	0.000	0.0000
	200	200.000	0.000	0.0000

Notes:

- The device shall be calibrated in full.
- SIAC is defined as the linear calibration.
- The measurement uncertainty shall be 0.005 mm.
- The calibration certificate shall not be reproduced or used without written approval of MPT.
- The device shall return to the factory calibration.

Makkeen Industrial Company

ENTERPRISES CALIBRATION CERTIFICATE

Customer Name and Address: MPT-02, AL-DIBRAH ST, DAMMAM, SA
 Calibration Date: February 5, 2020
 Calibration Due Date: February 5, 2021

Range	Standard Output	SIAC Output (SIAC)	Deviation	Error %
0 to 100 mm	0	0.000	0.000	0.0000
	50	50.000	0.000	0.0000
	100	100.000	0.000	0.0000
	150	150.000	0.000	0.0000
	200	200.000	0.000	0.0000

Notes:

- The device shall be calibrated in full.
- SIAC is defined as the linear calibration.
- The measurement uncertainty shall be 0.005 mm.
- The calibration certificate shall not be reproduced or used without written approval of MPT.
- The device shall return to the factory calibration.

Makkeen Industrial Company

ENTERPRISES CALIBRATION CERTIFICATE

Customer Name and Address: MPT-02, AL-DIBRAH ST, DAMMAM, SA
 Calibration Date: February 5, 2020
 Calibration Due Date: February 5, 2021

Range	Standard Output	SIAC Output (SIAC)	Deviation	Error %
0 to 200 mm	0	0.000	0.000	0.0000
	50	50.000	0.000	0.0000
	100	100.000	0.000	0.0000
	150	150.000	0.000	0.0000
	200	200.000	0.000	0.0000

Notes:

- The device shall be calibrated in full.
- SIAC is defined as the linear calibration.
- The measurement uncertainty shall be 0.005 mm.
- The calibration certificate shall not be reproduced or used without written approval of MPT.
- The device shall return to the factory calibration.

Makkeen Industrial Company

ENTERPRISES CALIBRATION CERTIFICATE

Customer Name and Address: MPT-02, AL-DIBRAH ST, DAMMAM, SA
 Calibration Date: February 5, 2020
 Calibration Due Date: February 5, 2021

Range	Standard Output	SIAC Output (SIAC)	Deviation	Error %
0 to 100 mm	0	0.000	0.000	0.0000
	50	50.000	0.000	0.0000
	100	100.000	0.000	0.0000
	150	150.000	0.000	0.0000
	200	200.000	0.000	0.0000

Notes:

- The device shall be calibrated in full.
- SIAC is defined as the linear calibration.
- The measurement uncertainty shall be 0.005 mm.
- The calibration certificate shall not be reproduced or used without written approval of MPT.
- The device shall return to the factory calibration.

Makkeen Industrial Company



OUR CUSTOMERS

Customer	Vendor no.
USG ME	26830
AL-FAISAL STEEL	2007706
ARAB STEEL	2007706
ALETTIFAQ	2007706
UNITED CARAVAN	93,89,90
ALAJAB GALVANING	A-OPS-0225
EASTERN MORRIS	301159
NATIONAL STEEL	2007706
DRIC STEEL	2007706
TUBULAR COATING	969
BINA PRECAST	1001776



شركة مكين للتصنيع
Makkeen Industrial Company

X

MACHINING DEPARTMENT



CNC TURNING HORIZONTAL



DESCRIPTION	SPECIFICATION
MAX TURNING DIA	750 mm (29.9")
MAX TURNING LENGTH	2000 mm (80")
Spindle Speed	3500 RPM
Spindle Bore	120 mm (5")

COMPONENTS PRODUCED - Oil & Gas Industry Application (Flanges, Coupling, Shafts, etc.)

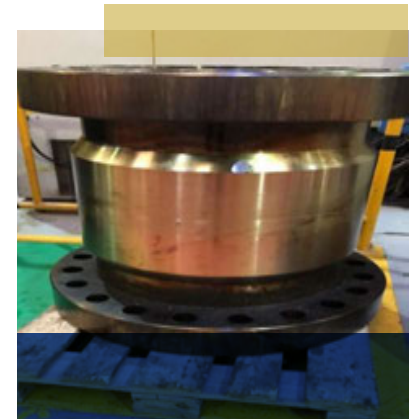
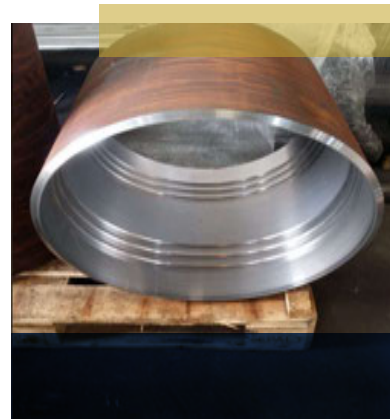
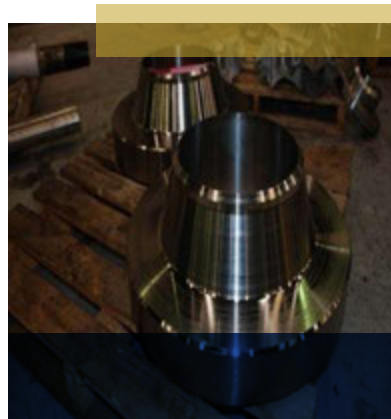


CNC TURNING VERTICAL



DESCRIPTION	SPECIFICATION
MAX TURNING DIA	1600 mm (62")
MAX TURNING HEIGHT	1020 mm (40")
MAX WEIGHT ON TABLE	6 T
NO OF TOOLS	12

COMPONENTS PRODUCED – Oil & Gas Industry Application





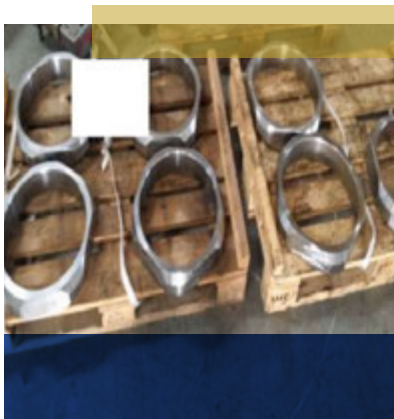
CNC VERTICAL MACHINING CENTER

With 4th axis Rotary Attachment



DESCRIPTION	SPECIFICATION
TABLE SIZE	1200*600 mm
X/Y/Z TRAVEL	1200/600/700 mm
MAX WEIGHT ON TABLE	1000 KG
NO OF TOOLS	24
SPINDLE SPEED	6000 RPM

COMPONENTS PRODUCED – Oil & Gas Industry Application



Heavy Duty Band SAW



ALF 560 O

DESCRIPTION

MAX CUTTING SIZE

MAX LENGTH OF PIPE

SPECIFICATION

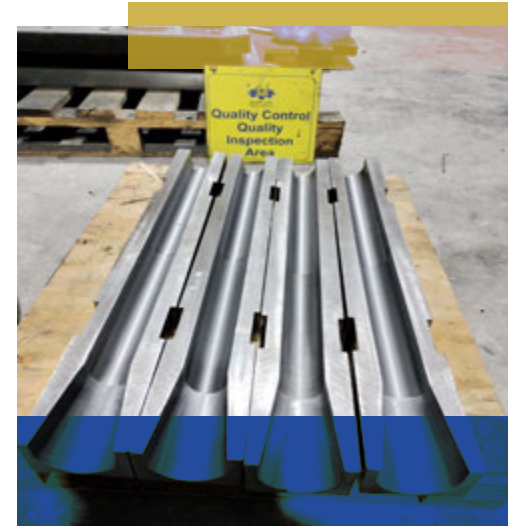
Dia 1020 mm (40")

M 18

Conventional Machines

MACHINE	SPECIFICATION	QTY	OPERATIONS
Lathe	1000mm Dia 4000mm Long	01	Turning Threading Boring Drilling
	500mmDia 2000mm Long	05	
	1100mm DIA 6000MM long	01	
Lathe	Ram Type 1200 * 500 mm	02	Milling Boring Drilling Gear Cutting
	Universal Head 1000 * 560mm	04	
Slotting	600 mm	01	Slotting , Key way cutting
	300 mm	01	
MACHINE	SPECIFICATION	QTY	OPERATIONS
Surface Grinding	1000 mm	01	
CYLINDRICAL Grinding	1000 mm	01	

SOME OF OUR MACHINING PRODUCTS





SOME OF OUR MACHINING PRODUCTS





SOME OF OUR MACHINING PRODUCTS



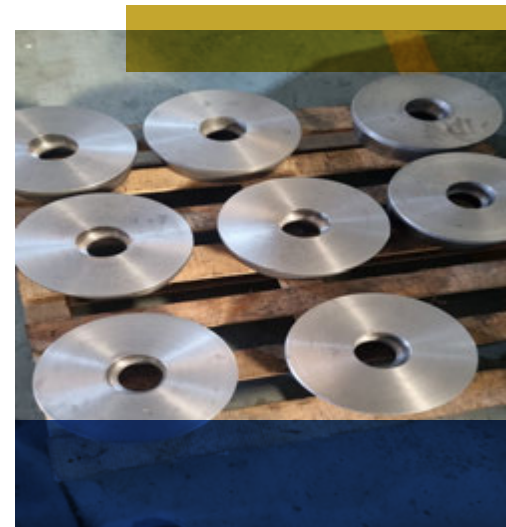
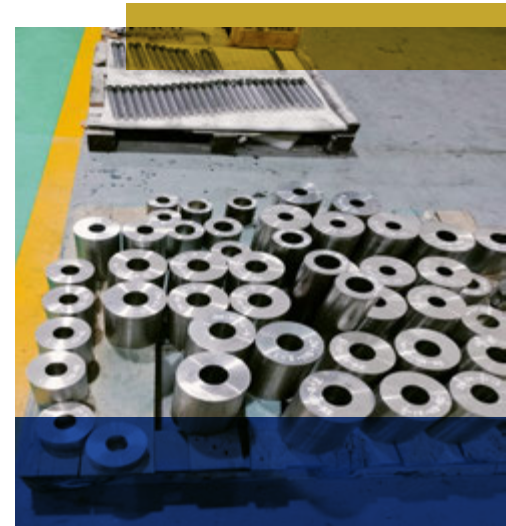


SOME OF OUR MACHINING PRODUCTS

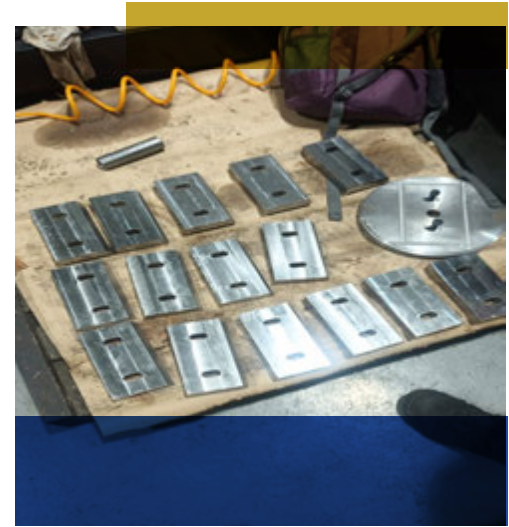
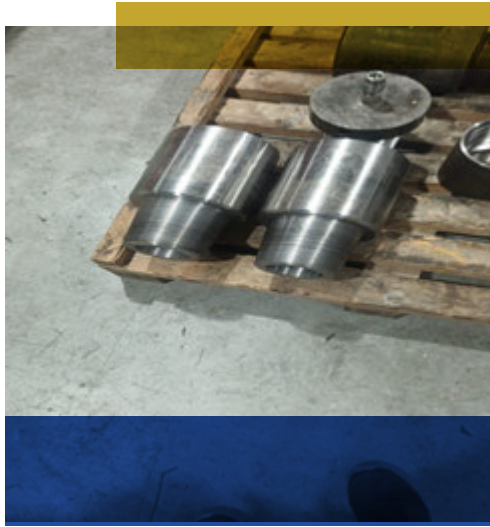




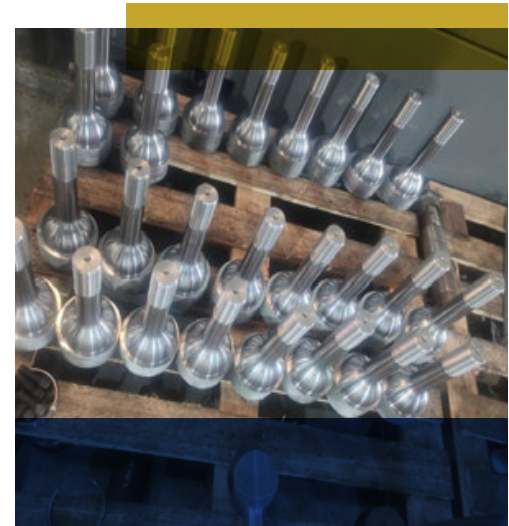
SOME OF OUR MACHINING PRODUCTS



SOME OF OUR MACHINING PRODUCTS



SOME OF OUR MACHINING PRODUCTS





شركة مكين للتصنيع
Makkeen Industrial Company

X



FABRICATION DEPARTMENT



Welding Machines

MACHINE	SPECIFICATION	QTY	OPERATIONS
MILLER USA SYNCHROWAVE 300	A 500	05	SMAW , GMAW ,TIG-Alu
ESAB 410	A -500 A 280	02	SMAW , GMAW ,TIG-Alu
MILLER USA THUNDERBOLT XL	A 300/200	01	AC / DC STICK WELDING



SOME OF OUR FABRICATION PRODUCTS

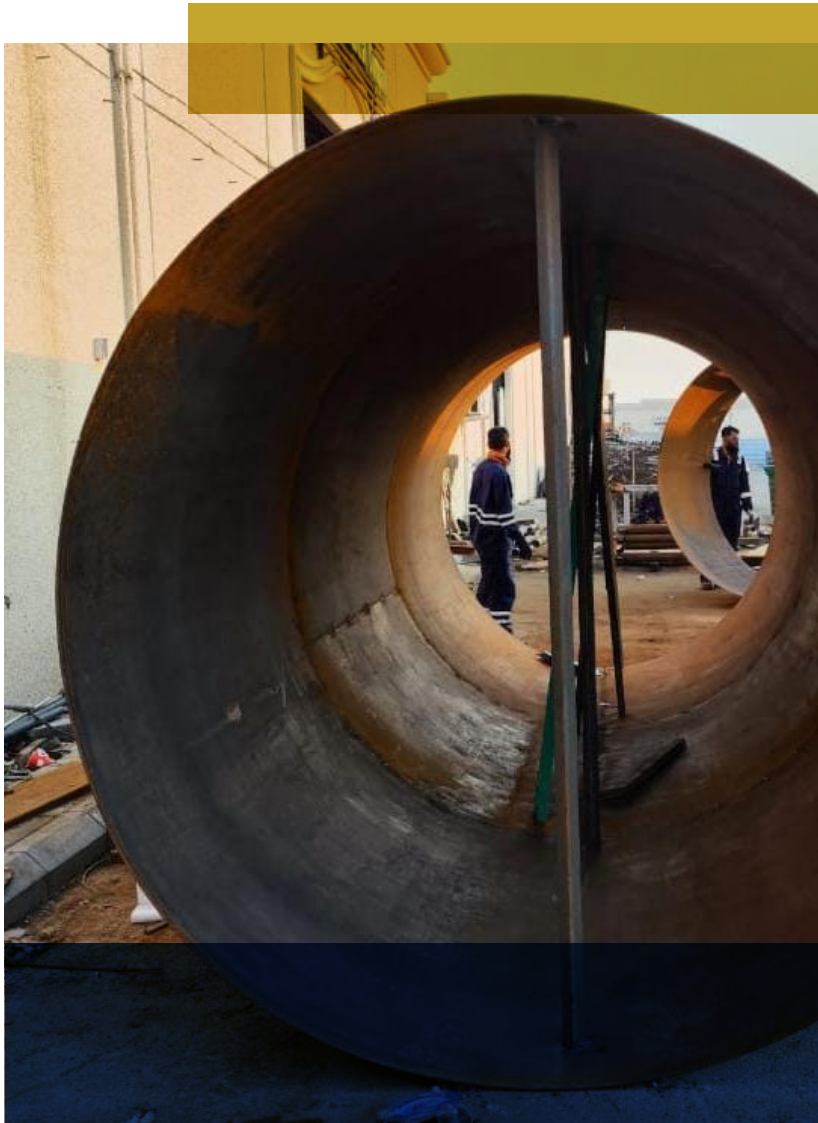


SOME OF OUR FABRICATION PRODUCTS

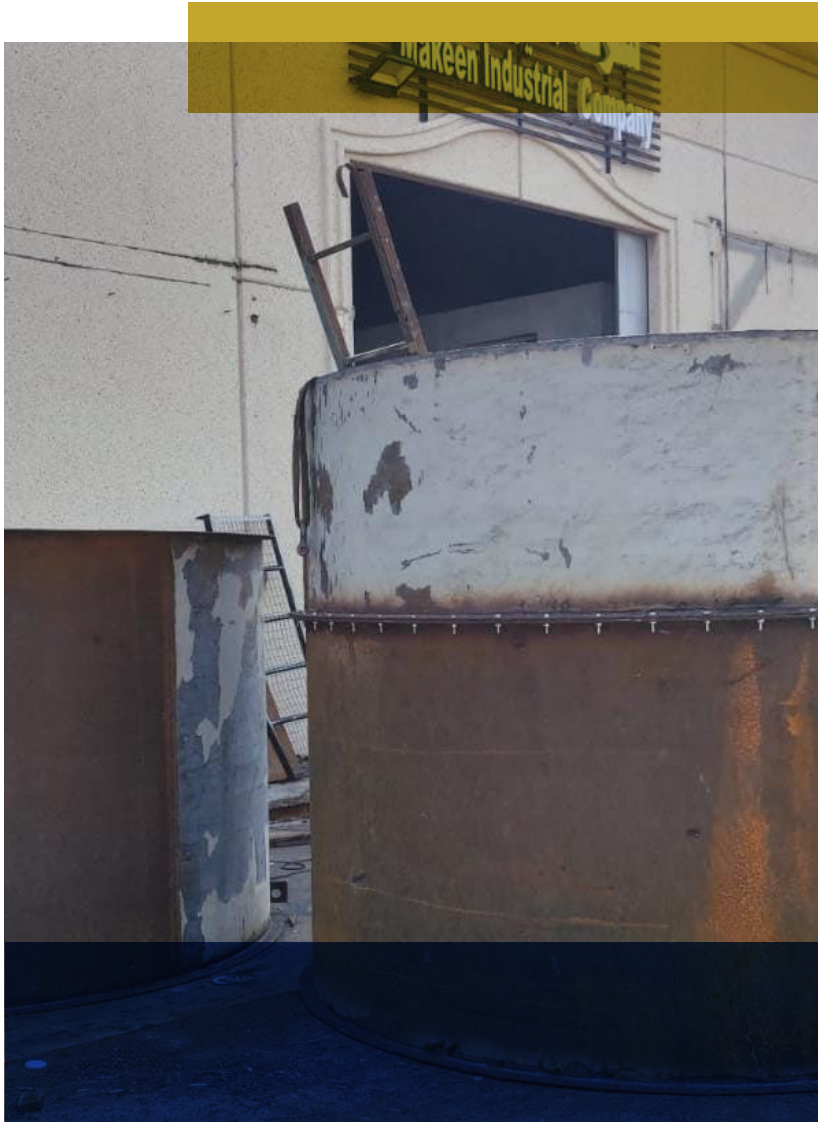




SOME OF OUR FABRICATION PRODUCTS



SOME OF OUR FABRICATION PRODUCTS



SOME OF OUR FABRICATION PRODUCTS



SOME OF OUR FABRICATION PRODUCTS



SOME OF OUR FABRICATION PRODUCTS



SOME OF OUR FABRICATION PRODUCTS



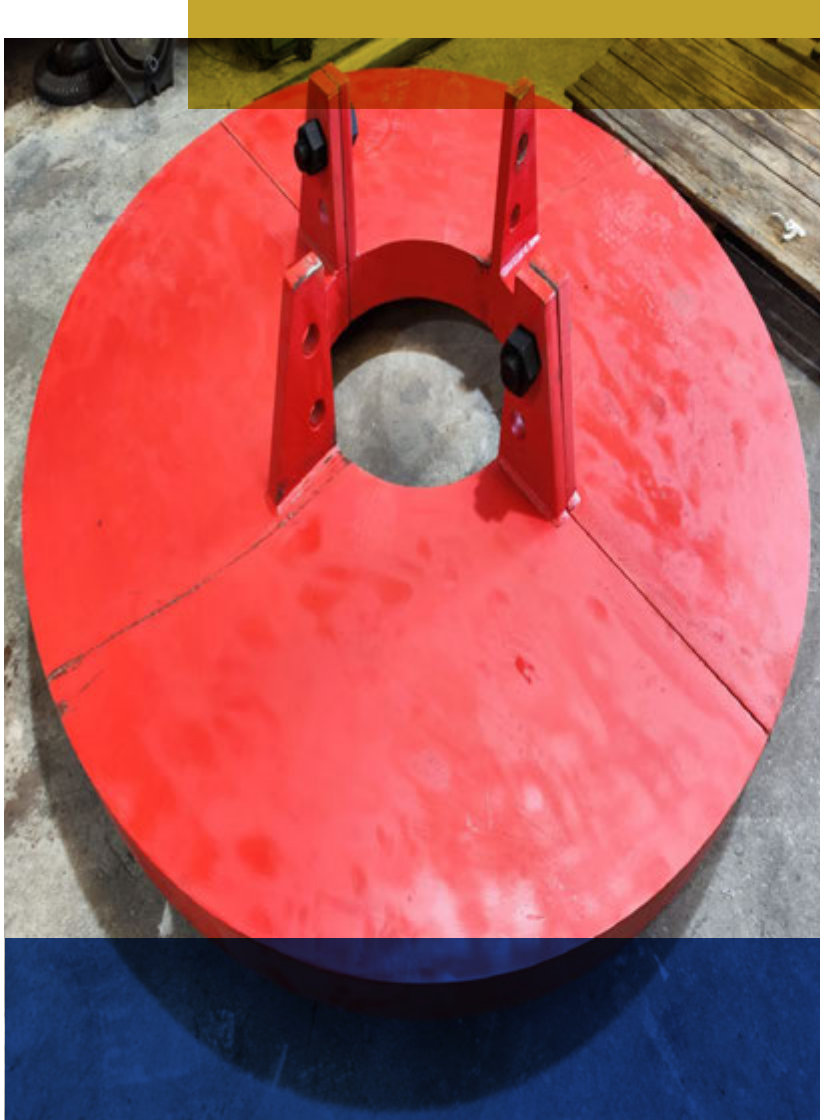
SOME OF OUR FABRICATION PRODUCTS



SOME OF OUR FABRICATION PRODUCTS



SOME OF OUR FABRICATION PRODUCTS



SOME OF OUR FABRICATION PRODUCTS



SOME OF OUR FABRICATION PRODUCTS



X



شركة مكين للتصنيع
Makkeen Industrial Company

CONTACT US

MAKKEEN INDUSTRIAL COMPANY

📍 BAGLAF INDUSTRIAL AREA AL TAWHEED STREET

✉️ PO BOX: 20550 ALKHOBAR 34627

✉️ sales@makkeen.com.sa

✉️ engineering@makkeen.com.sa

📞 966 53 861 82 10 / 966 53 861 82 60 / 966 53 221 33 44

📞 013 830 1500

✉️ Makkeen@makkeen.com.sa

🌐 www.makkeen.com.sa